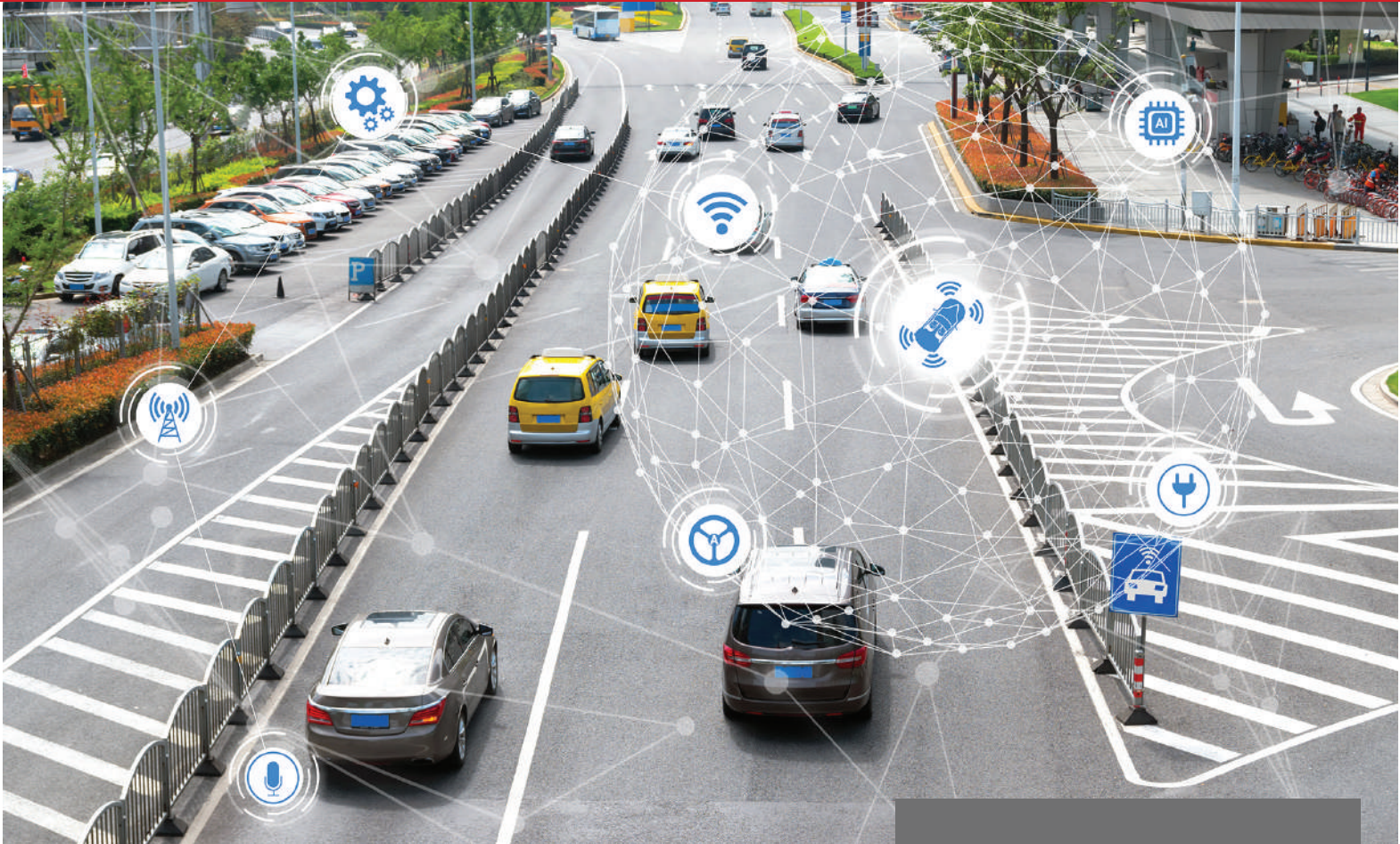




# LTS LINK

MAY 2023



## VIDEO SURVEILLANCE FOR SMART CITIES

### INTRO

With the rising scope of 5G, AI, IoT, and the cloud, the **smart cities** market is projected to grow to \$1024.4 billion by 2027. However, cities face various challenges such as natural disasters, mass shootings, and other crimes. A sophisticated security system is highly on-demand.

Let's explore how video surveillance can benefit smart cities, including the new LTS **Dual Lens PTZ** and its industry applications.

## TABLE OF CONTENTS

Smart Cities Market Overview • P.2

Surveillance as a Solution • P.3

A PTZ That Never Misses • P.4

Applications in Cities • P.5



# SMART CITIES MARKET OVERVIEW

## TRENDS

### Trends

According to PRNewswire, the smart cities market is expected to increase from \$511.6 billion in 2022 to \$1024.4 billion by 2027 at a compound annual growth rate (CAGR) of 14.9%.

### Opportunities

The rising scope of 5G, Artificial Intelligence (AI), Internet of Things (IoT), and the cloud enables the authorities to gather and analyze more data and insights than ever before.



### Challenges

Cities face many challenges with a high chance of encountering various emergency situations, such as natural disasters, gun violence, and other crimes. Because of these unpredictable events, it's crucial to build a powerful security system that aids cities in handling emergencies effectively to minimize potential damages.

### Case Study

Mexico City introduced the Safe City initiative that included the installation of 58,000 security cameras throughout the city, focusing on the neighborhoods with the highest crime rates and public transportation units. The cameras are connected to the city's C5 (Command, Control, Computers, Communications, and Citizen Contact) facility. The city's security strategy includes expanding technology usage with the implementation of video analytics, citizen mobile apps, and video storage with the cloud. The crime rate decreased by 2.4% since 2018.

Reference:  
[Securityinfowatch](#), [prnewswire](#), [securityinformed](#)



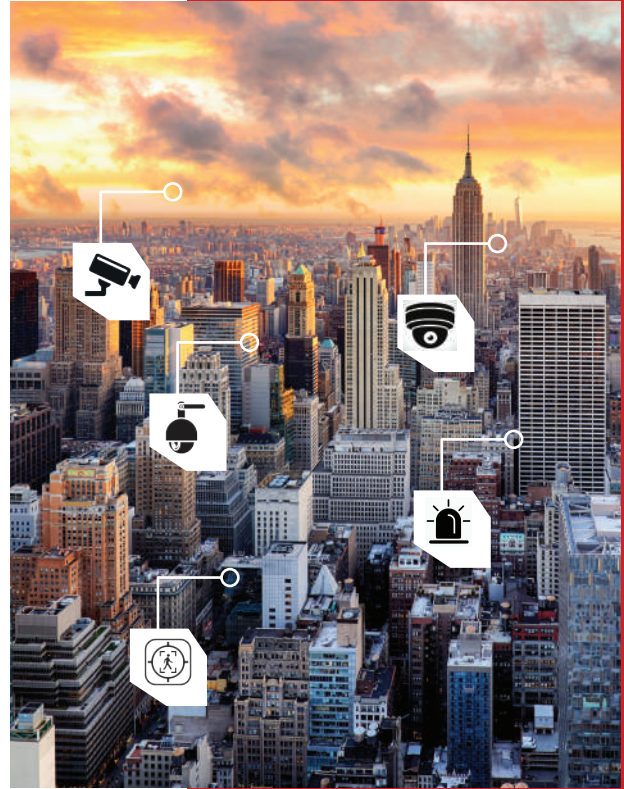
# VIDEO SURVEILLANCE AS A SOLUTION

## SOLUTION

AI-powered video surveillance is necessary to enable security administrators to quickly respond to and prevent serious incidents like reckless driving, shootings, robberies, and other serious incidents.

### PTZ for Crowd Monitoring

Our new dual lens PTZ (pan-tilt-zoom) cameras can track a moving target in real-time without missing the big picture. The perfect low-light performance makes it a reliable 24/7 video surveillance solution for city intersections and other high-density locations.



## LTS X-VMS One Software Runs All



### LPR for Vehicle Management

The LTS LPR (License Plate Recognition) camera enables fast and smart vehicle entry and exit, particularly in high-traffic areas such as business parks and shopping malls. It also offers permit entry exclusively for authorized vehicles when necessary.

### Facial Recognition for Access Control

Based on deep learning algorithms, the LTS intercom enables access control with multiple authentication methods like biometric/facial recognition. It allows a large number of authorized personnel to quickly enter the restricted areas smoothly.

### X-VMS: One Software for All

With our Video Management Software X-VMS, security admins can manage multiple sites, multi-point access control systems, and large groupings of camera recordings on LTS NVRs and DVRs.



# A PTZ THAT NEVER MISSES

## FEATURED

Our new PTZ cameras combine dual lenses in one unit to not only reduce the installation costs but also enable the capturing large areas and precise details simultaneously.

Fixed Lens:

- Color 24/7 sensor with excellent low-light performance
- Wide angle lens to monitor the overall perimeter

PTZ Lens:

- 25X optical zoom for closer viewing of subjects
- Smart Tracking to track a moving target in real time



VSPTZIP4C44WSL-X25IR    PTZIP4C44WSL-X25IR

### Comparison between Pro-VS and Platinum PTZ

Product Line	Pro-VS	Platinum
SKU	VSPTZIP4C44WSL-X25IR	PTZIP4C44W-X25IR
Fixed Lens		
Focal Length	4mm	2.8mm
Lens Tilt	± 5° adjustable	fixed
Lux Rating	0.0005 Lux	0.0005 Lux
Resolution	4MP	4MP
PTZ		
Focal Length	4.8 - 120mm	4.8 - 120mm
Optical Zoom	25x	25x
Illumination	IR	IR
Resolution	4MP	4MP
Smart tracking	Yes	Yes
General		
Alarm I/O	2 in 1 out	1 in 1 out
Audio I/O	1 in 1 out, built-in speaker	1 in 1 out
Active Deterrence	Yes	No

Main Differences:

VSPTZIP4C44WSL-X25IR

- 4mm fixed lens with adjustable tilt
- Active Deterrence: built-in mic and strobe light for crime prevention
- NDAA-compliant

PTZIP4C44WSL-X25IR

- 2.8mm wide angle fixed lens



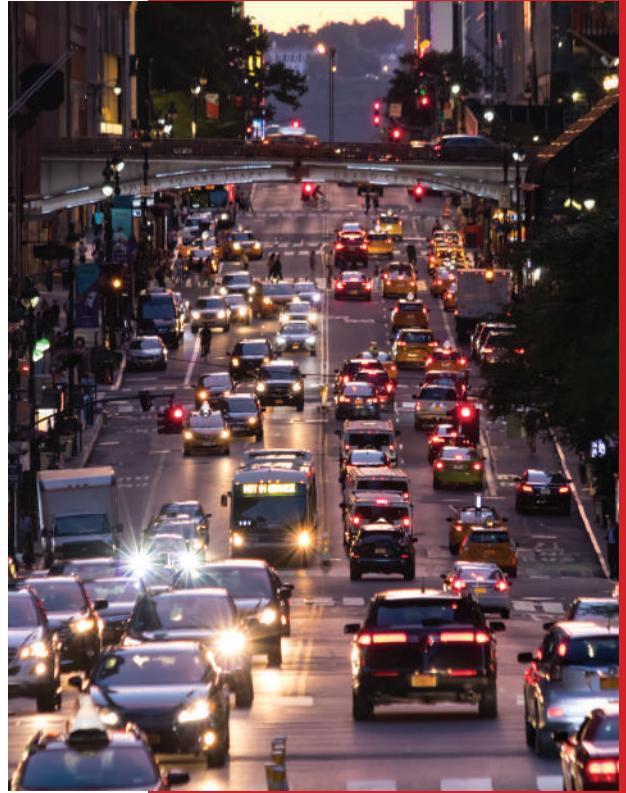
# APPLICATIONS IN CITIES

## INDUSTRY USE

LTS PTZ cameras enable security admins to obtain both broad area coverage and 25x zoom-in for details in the event of security incidents with a single camera. With Color 24/7 and Smart Tracking technologies, our new PTZ cameras allow users to view from different angles and capture targets at any time.

Additionally, VSPTZIP4C44WSL-X25IR enables visual and auditory warnings for Active Deterrence, making it a powerful frontline solution to keep trespassers away.

These PTZ cameras are widely used in locations such as city intersections, public squares, outdoor parking lots, office buildings, highways, and more.



## A SAFER HOUSTON WITH IP SOLUTIONS

### CASE STUDY

Downtown Houston needed an advanced surveillance system to ensure public safety for city blocks and intersections. However, wiring limitations on the main street and outdated infrastructures posed challenges to the installation of surveillance systems.

Working closely with the installers, LTS suggested a comprehensive wireless solution that included Smart Tracking PTZ, License Plate Recognition (LPR), varifocal vandal-proof dome cameras, Enterprise Level 64 channel NVRs, wireless bridges, and hard disk drives. PTZ cameras were installed at each intersection, with long-range wireless bridges sending data transmission up to 3 miles. Our solution helped enhance city security 24/7 at lower costs and higher efficiency.





## CONTACT US

Arizona-Phoenix | California-Los Angeles\* | California-San Francisco  
Florida-Miami | Georgia-Norcross | Illinois-Chicago | Maryland-Beltsville  
New Jersey-Mount Laurel\* | New York-Long Island | Texas-Dallas | Texas-Houston\*

[www.LTSecurityinc.com](http://www.LTSecurityinc.com)

*\*Indicates Regional Hub Location*